

Torres Strait Pollen Flora

Cassandra Rowe

Centre for Palynology and Palaeoecology, School of Geography and Environmental Science, Monash University, Clayton Victoria, 3800. Australia.

Current address: Department of Archaeology and Natural History, Research School of Pacific and Asian Studies, Australian National University, Canberra, ACT 0200. Australia.
Contact: cassandra.rowe@anu.edu.au.

Pollen and spore images from Appendix 3 in, Rowe, C. (2005) A Holocene History of Vegetation Change in the Western Torres Strait Region, Queensland, Australia. Unpublished PhD Thesis, Monash University.

All specimens were prepared using standard acetolysis techniques.

Note.

This information has been prepared for students and researchers interested in applying comprehensive palaeoecological techniques. It is open to use by everyone with the proviso that its use is cited in any publications, using the URL as the place of publication. Any comments regarding the images and information presented should be addressed to the author at the above contact.

Appendix 3

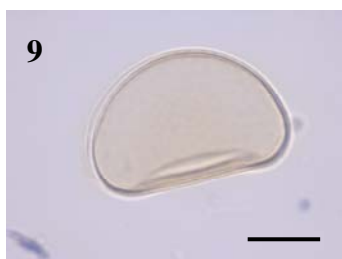
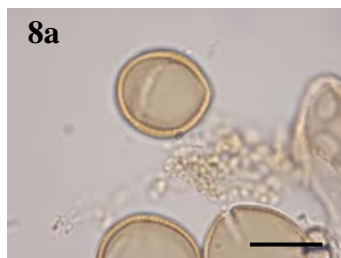
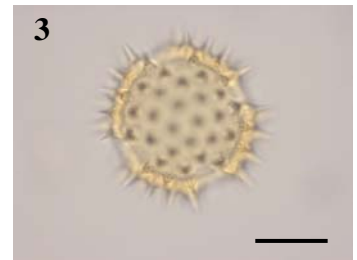
Photographs of selected pollen types

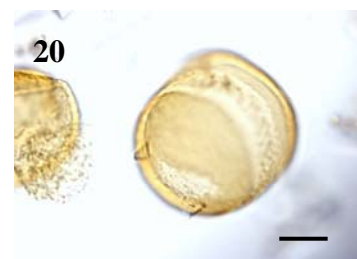
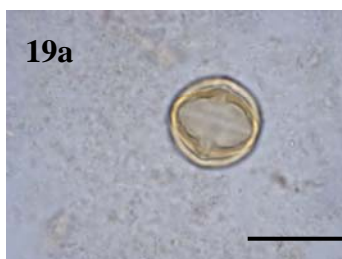
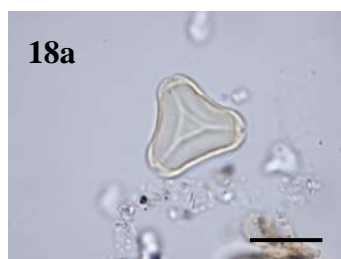
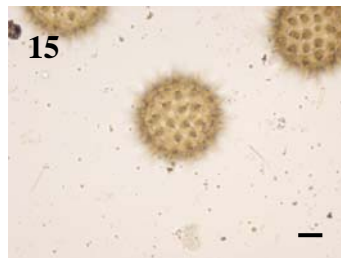
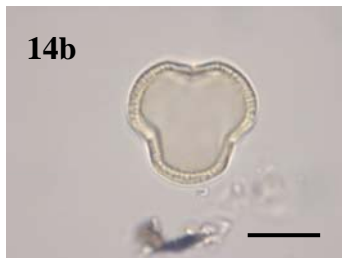
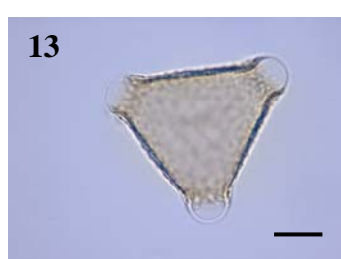
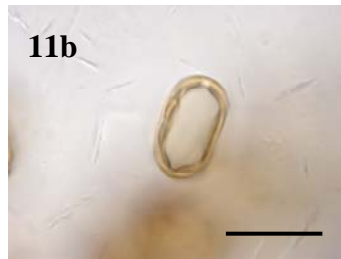
Reference pollen collected from Torres Strait

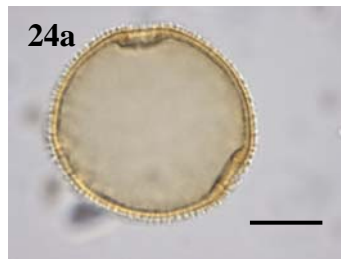
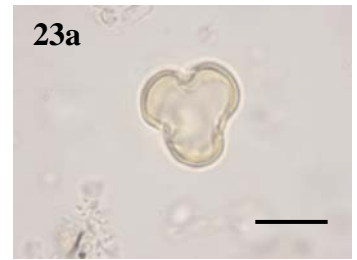
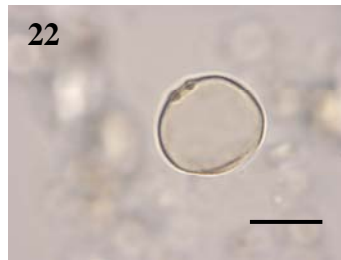
Photographs of selected modern pollen grains. Flowering specimens collected while on fieldwork in western Torres Strait. Scale bar represents 20µm; magnification ×1000.

1. *Acacia* (Mimosaceae)
2. *Arecaceae* (unidentified), equatorial view
3. *Asteraceae* (unidentified), mid-focus showing spines
- 4a. *Asteromyrtus* (Myrtaceae), polar view
- 4b. *Asteromyrtus* (Myrtaceae), equatorial view
- 5a. *Avicennia* (Avicenniaceae), equatorial view showing pore and distinct reticulum
- 5b. *Avicennia* (Avicenniaceae), polar view with exine structure
6. *Banksia* (Proteaceae), probably *B. dentata*
- 7a. *Bignoniaceae* (unidentified), equatorial view mid focus
- 7b. *Bignoniaceae* (unidentified), polar view
- 8a. *Dillenia* (Dilleniaceae) probably *D. alata*, equatorial view
- 8b. *Dillenia* (Dilleniaceae) probably *D. alata*, polar view
9. *Drynaria* (Polypodiaceae), probably *D. quercifolia*, equatorial view
- 10a. *Erythrina* (Fabaceae), probably *E. variegata*, polar view
- 10b. *Erythrina* (Fabaceae), probably *E. variegata*, equatorial view
- 11a. *Eucalyptus* (Myrtaceae), polar view
- 11b. *Eucalyptus* (Myrtaceae), equatorial view
- 12a. *Goodeniaceae* (unidentified), equatorial view
- 12b. *Goodeniaceae* (unidentified), equatorial view
13. *Grevillia* (Proteaceae), probably *G. striata*, polar view
- 14a. *Heliotropium* (Haemodoraceae), probably *H. coccineum*, equatorial view

- 14b. *Heliotropium* (Haemodoraceae), probably *H. coccineum*, polar view
- 15. *Ipomea* (Convolvulaceae), probably *I. pes-carprae*, mid focus
- 16. Loranthaceae (unidentified)
- 17. Malvaceae (unidentified), possibly *Hibiscus* spp.
- 18a. *Melaleuca* (Myrtaceae), polar view showing polar island
- 18b. *Melaleuca* (Myrtaceae), equatorial view
- 19a. *Melastoma* (Melastomataceae), probably *M. polyanthum*, equatorial view
- 19b. *Melastoma* (Melastomataceae), probably *M. polyanthum*, oblique view
- 20. *Nymphaea* (Nymphaeaceae), probably *N. violaceae*
- 21. *Passiflora* (Passifloraceae)
- 22. Poaceae (unidentified)
- 23a. *Sesuvium* (Aizoaceae), probably *S. portulacastrum*, polar view
- 23b. *Sesuvium* (Aizoaceae), probably *S. portulacastrum*, equatorial view
- 24a. *Wahlenbergia* (Campanulaceae), probably *W. caryophylloides*, polar view
- 24b. *Wahlenbergia* (Campanulaceae), probably *W. caryophylloides*, equatorial view







Pollen recovered from sediment cores

Photographs of selected fossil pollen grains. Scale bar represents 20µm; magnification ×1000.

- 1a. *Avicennia* (Avicenniaceae), equatorial view
- 1b. *Avicennia* (Avicenniaceae), polar view
- 2a. *Ceriops/Bruguiera* (Rhizophoraceae), equatorial view
- 2b. *Ceriops/Bruguiera* (Rhizophoraceae), polar view
3. *Cyperus* (Cyperaceae)
4. *Eleocharis* (Cyperaceae)
- 5a. *Eucalyptus* (Myrtaceae) type, polar view
- 5b. *Eucalyptus* (Myrtaceae) type, equatorial view
- 6a. *Excoecaria* (Euphorbiaceae), equatorial view
- 6b. *Excoecaria* (Euphorbiaceae), polar view
7. *Freycinetia* (Pandanaeae)
- 8a. *Leptocarpus* (Restionaceae), mid focus showing pore
- 8b. *Leptocarpus* (Restionaceae), top focus
- 9a. *Lumnitzera* (Combretaceae), equatorial view
- 9b. *Lumnitzera* (Combretaceae), polar view
- 10a. *Melaleuca* (Myrtaceae) type, polar view
- 10b. *Melaleuca* (Myrtaceae) type, equatorial view
11. *Pandanus* (Pandanaeae)
- 12a. *Rhizophora* (Rhizophoraceae), equatorial view
- 12b. *Rhizophora* (Rhizophoraceae), polar view
- 12c. *Rhizophora stylosa* (Rhizophoraceae) type, equatorial view
- 12d. Rhizophoraceae/*Ceriops* type, equatorial view
- 13a. *Terminalia* (Combretaceae), equatorial view
- 13b. *Terminalia* (Combretaceae), polar view
14. Trilete-rounded spore type (unidentified)

